



# Drayton Community Infant School

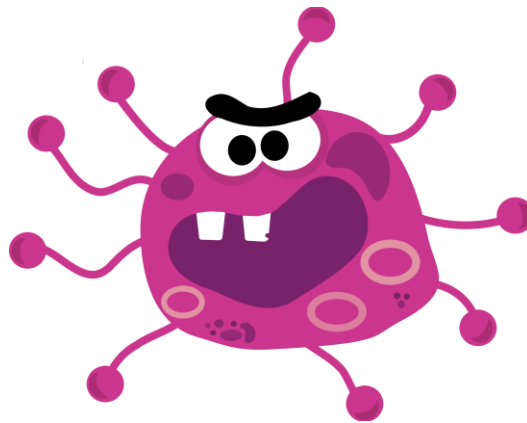
Weekly Newsletter

15.03.24



**OAK VALUE THIS WEEK WAS LISTEN AND LEARN**

## Medicines



Prescribed medicines should be handed in at the office and a form completed. These are the only medicines that we can administer. Once the form is completed and the medicine accepted by the office it will then be passed to the class team. Then it will be with the class team and can go forward and back from the classroom door.

## Social Media

We hope you are aware that Drayton has a Facebook page, and we try hard to update it weekly at least. We would like to thank you for keeping it such a positive place. We have been able to leave the comments on and love to see you tag each other or make positive comments. It's a pleasure to keep it updated.

## Sports for Schools

A massive congratulations to all of the children who took part in the sponsored sports event, everyone worked very hard and raised a massive £3620.61 in sponsorship!

This gives us over £1900 to spend on sports equipment for all years to benefit from!

The children's awards from Sports for Schools will be handed out to them in class next week for their fantastic efforts.

## Eco Schools

We now have a new eco code created by all the children which reflects the three topics for our current action plan (school grounds, marine and global citizenship).

Here it is!



Our eco-code will be proudly displayed in all classrooms and shared areas.

In our meeting this week we discussed ideas for how to improve our school grounds and we sorted the plastic lids we have received so far into colours to help with the planning of our marine art. Thank you to everyone who has been donating them, we will continue to collect them until the end of this term.

I hope families are enjoying taking part in this week's Big Plastic Count for Greenpeace. Please submit your data via the class link on the letter that was sent out by the end of Monday 18<sup>th</sup> March so that class footprints can be generated.

Miss Yaxley, eco-schools lead

## Spring story cafe craft

All classes will be having a Spring Story Cafe with crafts on Monday 25 March from 2-3pm. The main gates will be opened at 2pm for you to enter the school site in the usual way and through the classroom door. Please join your

child for this hour. You may of course have your children in one classroom in the case of siblings. We would recommend not bringing your little ones so you can concentrate on your school child but we understand that this is not always possible. Pushchairs must be left under the canopies.

The Friends Easter event will proceed after this.

## Meet the Staff

The image shows two side-by-side posters titled 'MEET OUR STAFF'. The left poster is for Miss Boggis and features a photo of her, a map of Australia, chocolate truffles, a photo of two cats, a rainbow, and a kangaroo. The right poster is for Miss Yaxley and features a photo of her, a photo of a black cat, a photo of a beach, and a photo of a garden.

**Miss Boggis**  
I love visiting family in Australia  
I make yummy chocolate truffles  
I have 2 cats called Willow and Freddo  
My favourite colour is purple

**Miss Yaxley**  
I have a fluffy black cat and 2 guinea pigs.  
I like being in nature and going for walks at the beach.  
I enjoy growing vegetables and fruit in my garden.  
My favourite colours are red and green.

The wonderfully kind Mrs Boggis is our TA in Starling class and also provides wraparound care within our breakfast and after school club.

Ms Yaxley is our super Fox class teacher and is the school's eco lead!

## Spring story cafe with crafts

All classes will be having a Spring Story Cafe with crafts on Monday 25 March from 2-3pm. The main gates will be opened at 2pm for you to enter the school site in the usual way and through the classroom door. Please join your child for this hour. You may of course have your children in one classroom in the case of siblings. We would recommend not bringing your little ones so you can concentrate on your school child but we understand that this is not always possible. Pushchairs must be left under the canopies.

The Friends fabulous Easter event will proceed afterwards.

## PE

Just a reminder that on your child's PE day, that those with long hair should ensure that it is tied up and any earrings are removed. This is to keep your children safe during their fun, active PE lessons. Also, a quick reminder that the school PE kit is a white t-shirt and black bottoms with suitable, sturdy trainers.

## Breakfast Club

Surprise!! Breakfast club made these beautiful tiles for their favourite ladies



## Dates for the diary

Reception – Yellow	Year 1 – Blue	Year 2 – Green	Whole school – pink	KS1(Y1&Y2) - Grey
--------------------	---------------	----------------	---------------------	-------------------

### March 2024

18.3.2024	Monday	Year 2s visiting Drayton Junior School
21.03.24	Thursday	Reception walk down to St.Margaret’s Church
22.03.24	Friday	Yr 1 P.E Festival
25.03.24	Monday	Yr 2 P.E Festival
25.03.24	Monday	Friends Easter event and Easter egg hunt 3-4 pm.
25.03.2924	Monday	Spring Story Cafe and Crafts Class 2 – 3 pm
27.03.2024	Wednesday	School closes for Easter holiday 3pm

### April 2024

15.04.2024	Monday	School re-opens for Summer term
25.04.2024	Thursday	School Discos YR/Y1/Y2

### May 2024

15.05.2024	Wednesday	Parent Forum 2.15pm
24.05.2024	Friday	School closes for half term

### June 2024

03.06.2024	Monday	School re-opens
03.06.2024	Monday	Reception - Vision and Hearing
04.06.2024	Tuesday	
05.06.2024	Wednesday	

### July 2024

12.07.2024	Friday	Parent Forum 2:15pm
19.07.2024	Friday	Last day of term

## School day times from September 2023



8.20am	Gate Open
8.30am	Classroom doors open
8.40am	Classroom doors close
3pm	End of the school day

## Term dates

### 2023-2024

September 2023						
M	T	W	T	F	S	S
				1	2	3
4	5	6	7	8	9	10
11	12	13	14	15	16	17
18	19	20	21	22	23	24
25	26	27	28	29	30	

October 2023						
M	T	W	T	F	S	S
						1
2	3	4	5	6	7	8
9	10	11	12	13	14	15
16	17	18	19	20	21	22
23	24	25	26	27	28	29
30	31					

November 2023						
M	T	W	T	F	S	S
		1	2	3	4	5
6	7	8	9	10	11	12
13	14	15	16	17	18	19
20	21	22	23	24	25	26
27	28	29	30			

December 2023						
M	T	W	T	F	S	S
				1	2	3
4	5	6	7	8	9	10
11	12	13	14	15	16	17
18	19	20	21	22	23	24
25	26	27	28	29	30	31

January 2024						
M	T	W	T	F	S	S
1	2	3	4	5	6	7
8	9	10	11	12	13	14
15	16	17	18	19	20	21
22	23	24	25	26	27	28
29	30	31				

February 2024						
M	T	W	T	F	S	S
			1	2	3	4
5	6	7	8	9	10	11
12	13	14	15	16	17	18
19	20	21	22	23	24	25
26	27	28	29			

March 2024						
M	T	W	T	F	S	S
				1	2	3
4	5	6	7	8	9	10
11	12	13	14	15	16	17
18	19	20	21	22	23	24
25	26	27	28	29	30	31

April 2024						
M	T	W	T	F	S	S
1	2	3	4	5	6	7
8	9	10	11	12	13	14
15	16	17	18	19	20	21
22	23	24	25	26	27	28
29	30					

May 2024						
M	T	W	T	F	S	S
		1	2	3	4	5
6	7	8	9	10	11	12
13	14	15	16	17	18	19
20	21	22	23	24	25	26
27	28	29	30	31		

June 2024						
M	T	W	T	F	S	S
					1	2
3	4	5	6	7	8	9
10	11	12	13	14	15	16
17	18	19	20	21	22	23
24	25	26	27	28	29	30

July 2024						
M	T	W	T	F	S	S
1	2	3	4	5	6	7
8	9	10	11	12	13	14
15	16	17	18	19	20	21
22	23	24	25	26	27	28
29	30	31				

August 2024						
M	T	W	T	F	S	S
			1	2	3	4
5	6	7	8	9	10	11
12	13	14	15	16	17	18
19	20	21	22	23	24	25
26	27	28	29	30	31	

White dates - schools open to pupils  
 Yellow dates - pupil holiday  
 Red dates - bank holiday

This calendar applies to community schools, community special schools, VC schools and nursery schools and sets the days on which school transport will be provided. While most Foundation, VA, foundation special, free schools and academy trusts who are able to set their own dates, adopt the Norfolk Model, we advise you to check with your child's school before making holiday or other commitments.

September 2024						
M	T	W	T	F	S	S
						1
2	3	4	5	6	7	8
9	10	11	12	13	14	15
16	17	18	19	20	21	22
23	24	25	26	27	28	29
30						

October 2024						
M	T	W	T	F	S	S
	1	2	3	4	5	6
7	8	9	10	11	12	13
14	15	16	17	18	19	20
21	22	23	24	25	26	27
28	29	30	31			

November 2024						
M	T	W	T	F	S	S
				1	2	3
4	5	6	7	8	9	10
11	12	13	14	15	16	17
18	19	20	21	22	23	24
25	26	27	28	29	30	

December 2024						
M	T	W	T	F	S	S
						1
2	3	4	5	6	7	8
9	10	11	12	13	14	15
16	17	18	19	20	21	22
23	24	25	26	27	28	29
30	31					

January 2025						
M	T	W	T	F	S	S
		1	2	3	4	5
6	7	8	9	10	11	12
13	14	15	16	17	18	19
20	21	22	23	24	25	26
27	28	29	30	31		

February 2025						
M	T	W	T	F	S	S
					1	2
3	4	5	6	7	8	9
10	11	12	13	14	15	16
17	18	19	20	21	22	23
24	25	26	27	28		

March 2025						
M	T	W	T	F	S	S
					1	2
3	4	5	6	7	8	9
10	11	12	13	14	15	16
17	18	19	20	21	22	23
24	25	26	27	28	29	30
31						

April 2025						
M	T	W	T	F	S	S
	1	2	3	4	5	6
7	8	9	10	11	12	13
14	15	16	17	18	19	20
21	22	23	24	25	26	27
28	29	30				

May 2025						
M	T	W	T	F	S	S
			1	2	3	4
5	6	7	8	9	10	11
12	13	14	15	16	17	18
19	20	21	22	23	24	25
26	27	28	29	30	31	

June 2025						
M	T	W	T	F	S	S
						1
2	3	4	5	6	7	8
9	10	11	12	13	14	15
16	17	18	19	20	21	22
23	24	25	26	27	28	29
30						

July 2025						
M	T	W	T	F	S	S
	1	2	3	4	5	6
7	8	9	10	11	12	13
14	15	16	17	18	19	20
21	22	23	24	25	26	27
28	29	30	31			

August 2025						
M	T	W	T	F	S	S
				1	2	3
4	5	6	7	8	9	10
11	12	13	14	15	16	17
18	19	20	21	22	23	24
25	26	27	28	29	30	31

Key : White dates - schools open to pupils  
 Yellow dates - pupil holiday  
 Red dates - bank holiday

Five staff training days will be selected from yellow dates, we suggest 2 & 3 September, 25 October, 6 January and 22 April. Some may choose to use twilight hours for staff training instead of some or all of these.